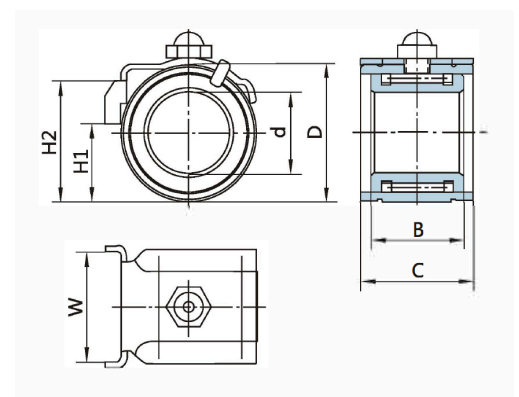


Bearing No.		Boundary Dimensions(mm)								Weight (kg)	Minimum basic Carrying capacity
		D	d	B	C	H1	H2	W	N		
GB	ISO	-0.05	-0.01	±0.025		min	max	+0.4	-0.2		
LZ2800	UWL2800	28	16.5	19	22	17	23	—	5.9	0.060	6.0
LZ2812		28	16.5	19	22	16	24	12.2	—	0.060	6.0
LZ2820	UWL2820	28	16.5	19	22	16	24	20.2	—	0.060	6.0
LZ2822	UWL2822	28	16.5	19	22	16	24	22.2	—	0.060	6.0
LZ3200	UWL3200	32	19	20	23	19	25	—	5.9	0.082	7.0
LZ3224	UWL3224	32	19	20	23	19	27	24.2	—	0.082	7.0
LZ3226	UWL3226	32	19	20	23	19	27	26.2	—	0.082	7.0
LZ3600	UWL3600	36	21	22	25	21	27	—	5.9	0.119	10.0
LZ3624	UWL3624	36	21	22	25	21	29	24.2	—	0.119	10.0
LZ3626	UWL3626	36	21	22	25	21	29	26.2	—	0.119	10.0
LZ4000	UWL4000	40	23	23.5	27	23	29	—	5.9	0.160	12.0
LZ4024	UWL4024	40	23	23.5	27	24	32	24.2	—	0.160	12.0
LZ16.5	—	30	16.5	19	23	10	24	22.4	—	0.070	6.0
LZ3000	UWL3000	30	18.5	19	22	18	27	—	5.9	0.066	6.0
LZ18.5	UWL3026	30	18.5	19	22	18	27	26.2	—	0.066	6.0
LZ19	—	36	19	22	26	12.5	28.5	25.4	—	0.116	7.0
LZ22	—	42	22	23	27	15	33	25.4	—	0.160	11.0
LZ25	—	47	25	25	29	16.7	38	28.2	—	0.218	15.0
LZ3200G	—	32	19	20	23	—	—	—	—	0.08	7.0

PRECISION BOTTOM ROLLER BEARINGS

Precision bottom roller bearing is made of high grade steel with long-life and high precision. The parts are exchangeable for inner ring, outer ring and needle subassembly. It adopts strengthened nylon cage in new structure with patent technique, and reliable locating cover with higher precision. With the nice finishing and advanced technology, our products can take place of the imported bearing.

While assembling or using, roller is more easily adjusted. The bearing can reduce the mechanical wave, improve the CV value remarkably and extend the bearing' s life.



Bearing No.		Boundary Dimensions(mm)								Weight (kg)	Minimum basic Carrying capacity
		D	d	B	C	H1	H2	W	N		
GB	ISO	-0.05	-0.01	±0.025		min	max	+0.4	-0.2		
	UWL3224E	32	19	20	24	19	27	24.2	—	0.082	7.0
	UWL2822E	28	16.5	19	23	16	24.6	22.3	—	0.061	6.0