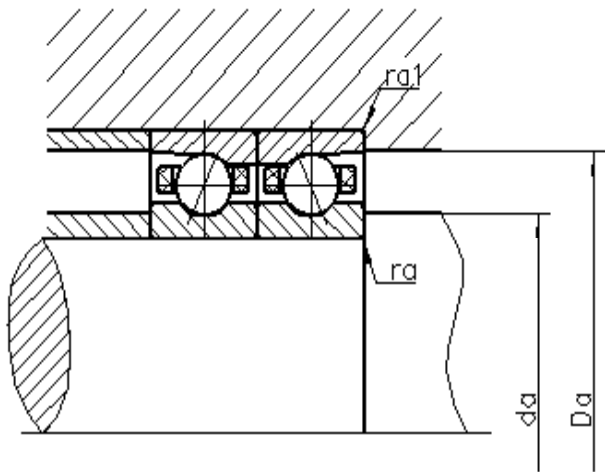
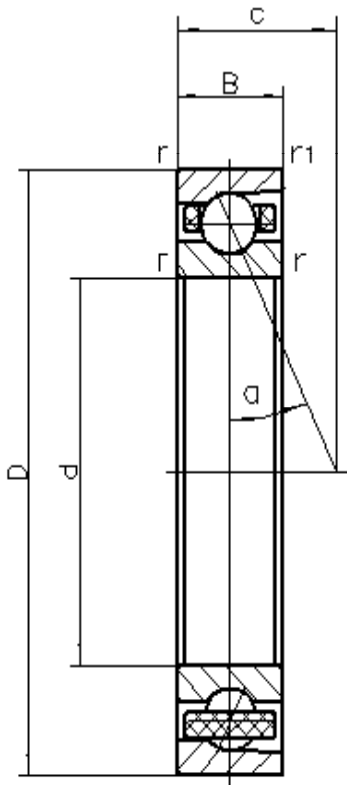


PRECISION ANGULAR CONTACT BALL BEARINGS

TYPE 7008CTA/HQ1P4S HCB7008 C T P4S UL
PRECISION P4S
CERAMIC BALL



d	40	mm	
D	68	mm	
B	15	mm	
c	14.7	mm	
Da	62	mm	Tolerance: H12
da	46	mm	Tolerance: h12
r _{min}	1	mm	
r _{l min}	0.6	mm	
r _{a max}	1	mm	
r _{al max}	0.3	mm	
α	15°		Contact angle
m	0.168	kg	Mass
Cr	20570	N	Basic dynamic load rating, radial
Cor	11120	N	Basic static load rating, radial
Fv _L	120	N	Preload force
Fv _M	290	N	Preload force
Fv _H	590	N	Preload force
Ca _L	52.7	N/um	Axial rigidity
Ca _M	76.7	N/um	Axial rigidity
Ca _H	106.7	N/um	Axial rigidity
Limiting speeds	45000	r/min	Lubrication: oil
	30000	r/min	Lubrication: grease