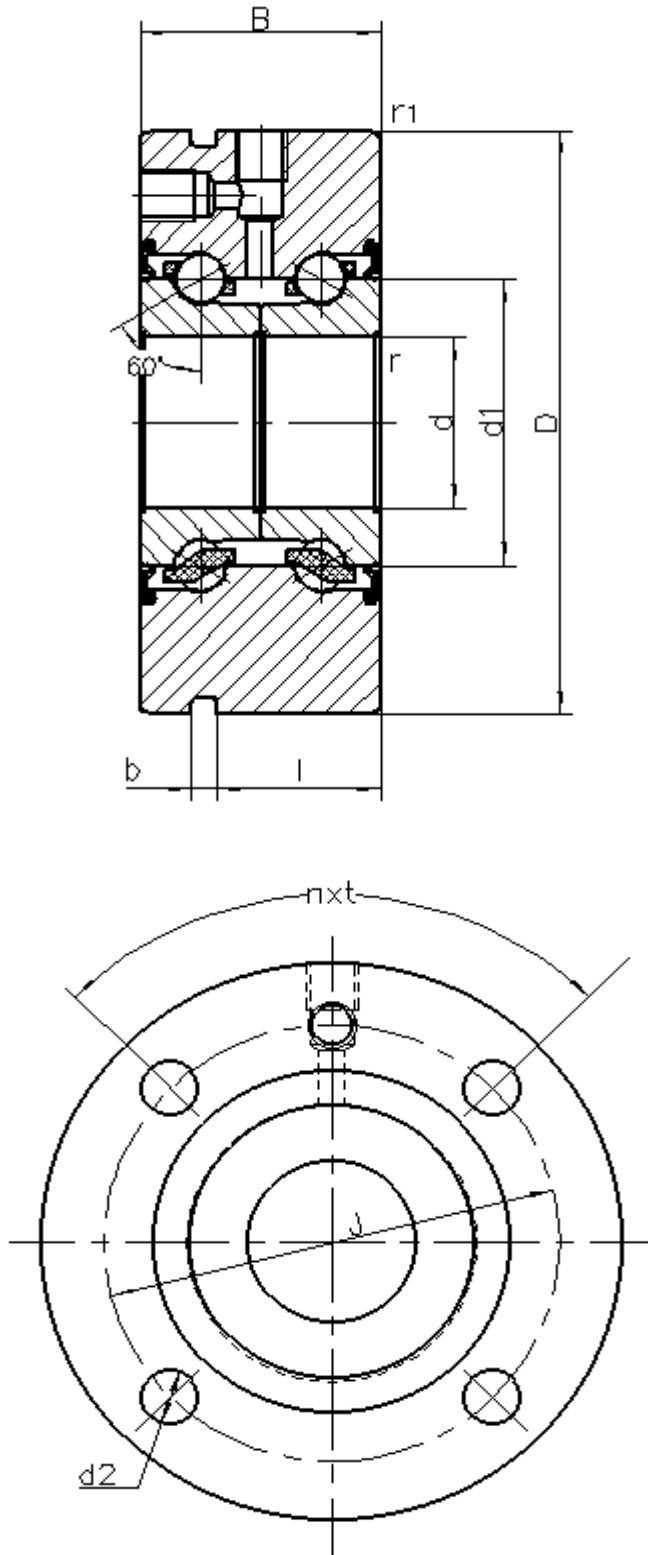


AXIAL ANGULAR CONTACT BALL BEARINGS

TYPE: ZKLF1255-2RS
 PRECISION: P4
 DOUBLE ROW, FOR SCREW MOUNTING



d	12	mm	Tolerance:0/-0.005
D	55	mm	Tolerance:0/-0.010
B	25	mm	Tolerance:0/-0.25
d1	23,8	mm	
r min	0,3	mm	
r1 min	0,6	mm	
J	42	mm	
d2	6,8	mm	
b	3	mm	
l	17	mm	
α	60°		Contact angle
nxt	3×120°		Pitch
Da	33	mm	Max. shoulder diameter of housing
da	16	mm	Min. shoulder diameter of shaft
m	0,38	≈kg	mass
Ca	16200	N	Basic dynamic load rating,axial
Coa	29000	N	Basic static load rating, axial
CaL	400	N/um	Axial rigidity
MRL	0,15	Nm	Frictional torque
Limiting speed	9000	r/min	Lubrication: grease
Thermally safe speed	3800	r/min	
Fixing screw: M6 (3×120°)			
Bearing axial runout:2um (Based on rotating inner ring)			