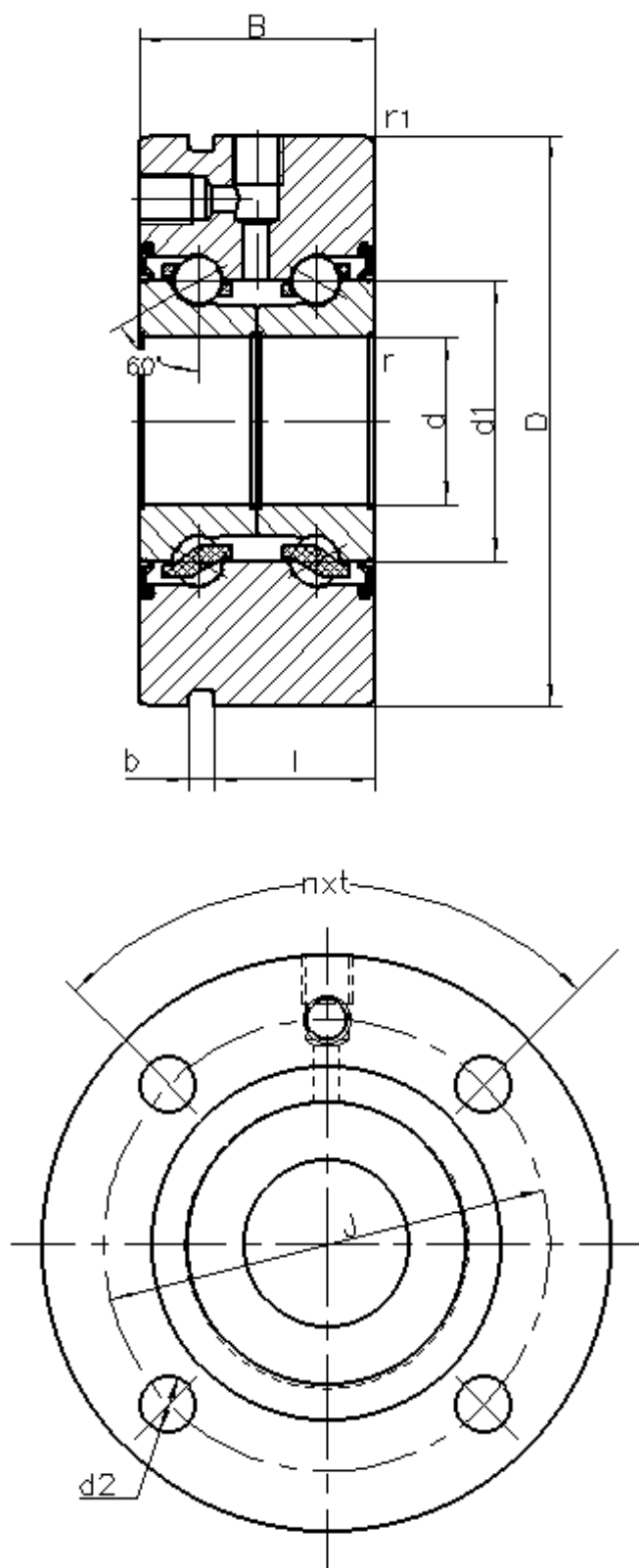


## AXIAL ANGULAR CONTACT BALL BEARINGS

TYPE: ZKLF2068-2RS  
 PRECISION: P4  
 DOUBLE ROW, FOR SCREW MOUNTING



d	20	mm	Tolerance:0/-0.005
D	68	mm	Tolerance:0/-0.010
B	28	mm	Tolerance:0/-0.25
d1	33,4	mm	
r min	0,3	mm	
r1 min	0,6	mm	
J	53	mm	
d2	6,8	mm	
b	3	mm	
l	19	mm	
α	60°		Contact angle
nxt	4×90°		Pitch
Da	43	mm	Max. shoulder diameter of housing
da	25	mm	Min. shoulder diameter of shaft
m	0,64	≈kg	mass
Ca	19,7	N	Basic dynamic load rating,axial
Coa	42,6	N	Basic static load rating, axial
CaL	740	N/um	Axial rigidity
MRL	0,25	Nm	Frictional torque
Limiting speed	6500	r/min	Lubrication: grease
Thermally safe speed	3000	r/min	
Fixing screw: M6 (4×90°)			
Bearing axial runout:2um (Based on rotating inner ring)			