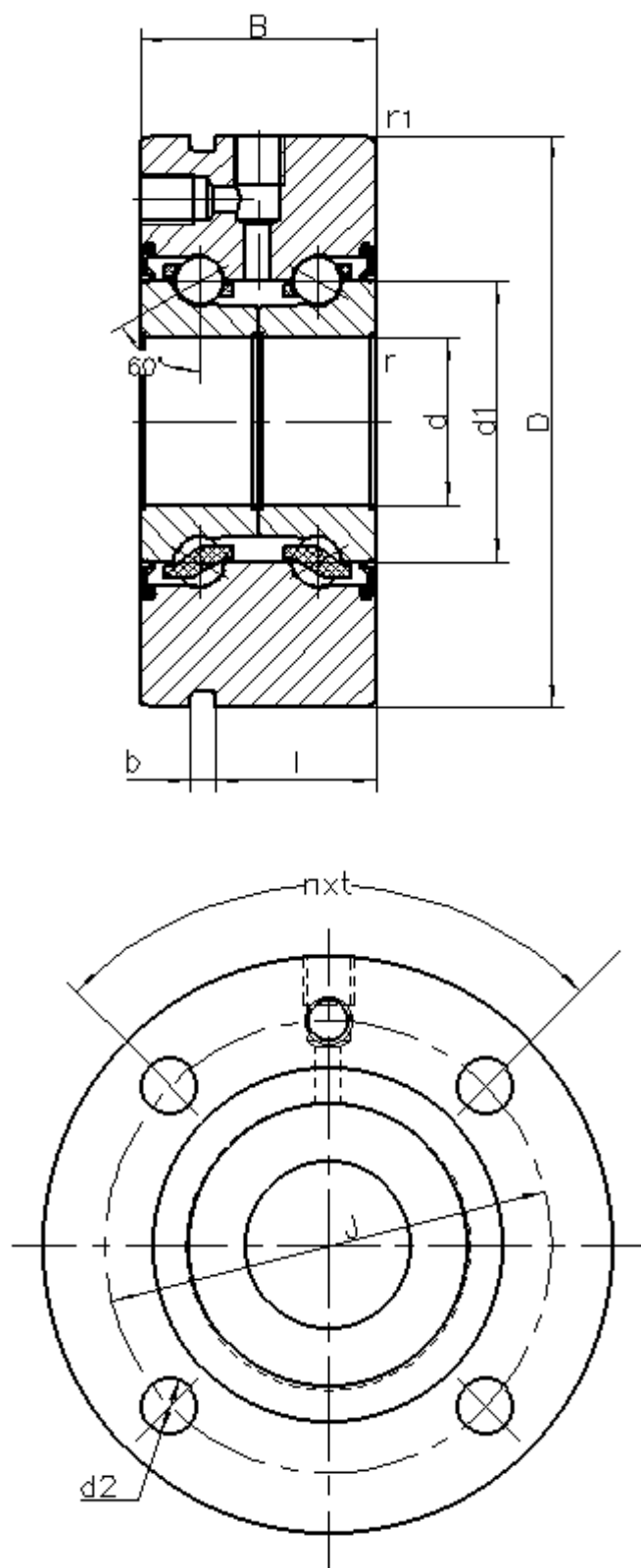


AXIAL ANGULAR CONTACT BALL BEARINGS

TYPE: ZKLF3080-2RS
 PRECISION: P4
 DOUBLE ROW, FOR SCREW MOUNTING



d	30	mm	Tolerance:0/-0.005
D	80	mm	Tolerance:0/-0.010
B	28	mm	Tolerance:0/-0.25
d1	43,4	mm	
r min	0,3	mm	
r1 min	0,6	mm	
J	63	mm	
d2	6,5	mm	
b	3	mm	
l	19	mm	
α	60°		Contact angle
nxt	6×60°		Pitch
Da	53	mm	Max. shoulder diameter of housing
da	40	mm	Min. shoulder diameter of shaft
m	0,81	≈kg	mass
Ca	21400	N	Basic dynamic load rating,axial
Coa	52600	N	Basic static load rating, axial
CaL	1040	N/um	Axial rigidity
MRL	0,4	Nm	Frictional torque
Limiting speed	5000	r/min	Lubrication: grease
Thermally safe speed	2200	r/min	
Fixing screw: M6 (6×60°)			
Bearing axial runout:2.5um (Based on rotating inner ring)			